



# DRIVING IN THE WRONG DIRECTION

Combating The Surge in Roadway Deaths



## NATIONAL PICTURE 2011

32,479 Traffic Fatalities –  
Lowest level in 62 years, since  
1949.

That number was down 26%  
from 2005, and had been  
trending downward an average  
of 2% every year since 2005.

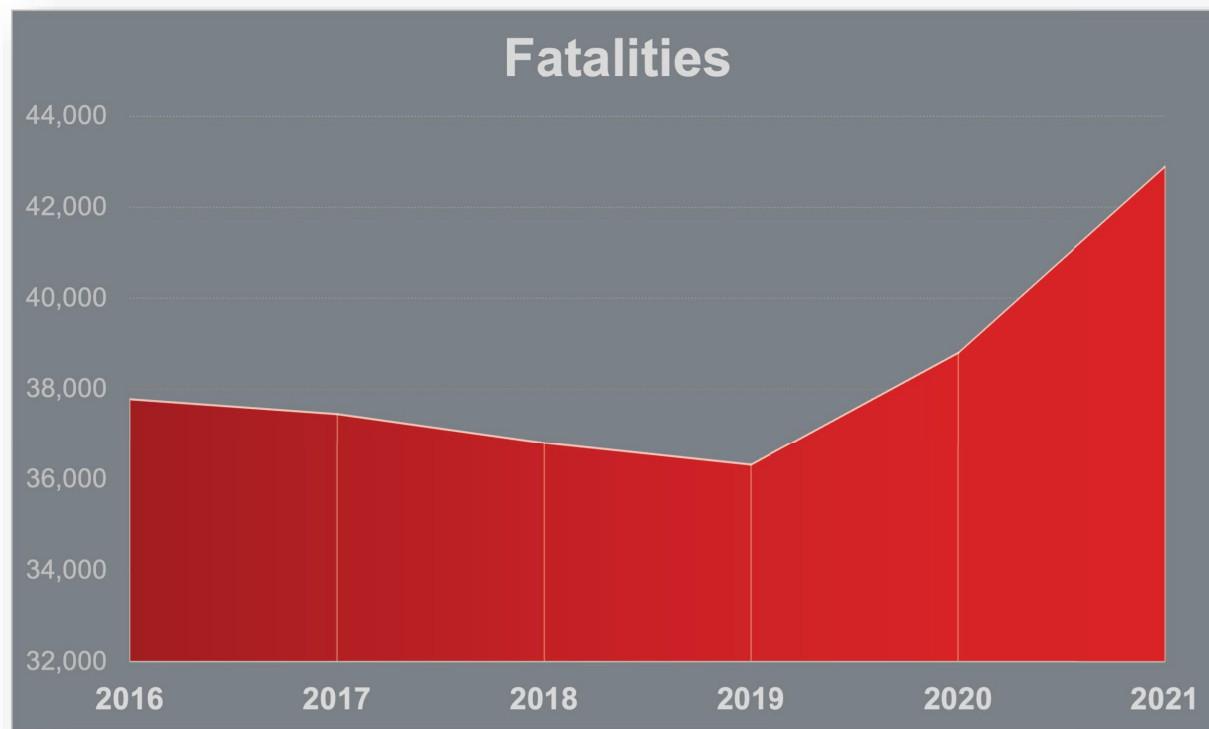


## 2021/2022 ROADWAY FATALITIES

**NHTSA PROJECTS 42,915 fatalities for 2021, a 10.5% increase over 2020**

**Highest increase since FARS record-keeping began**

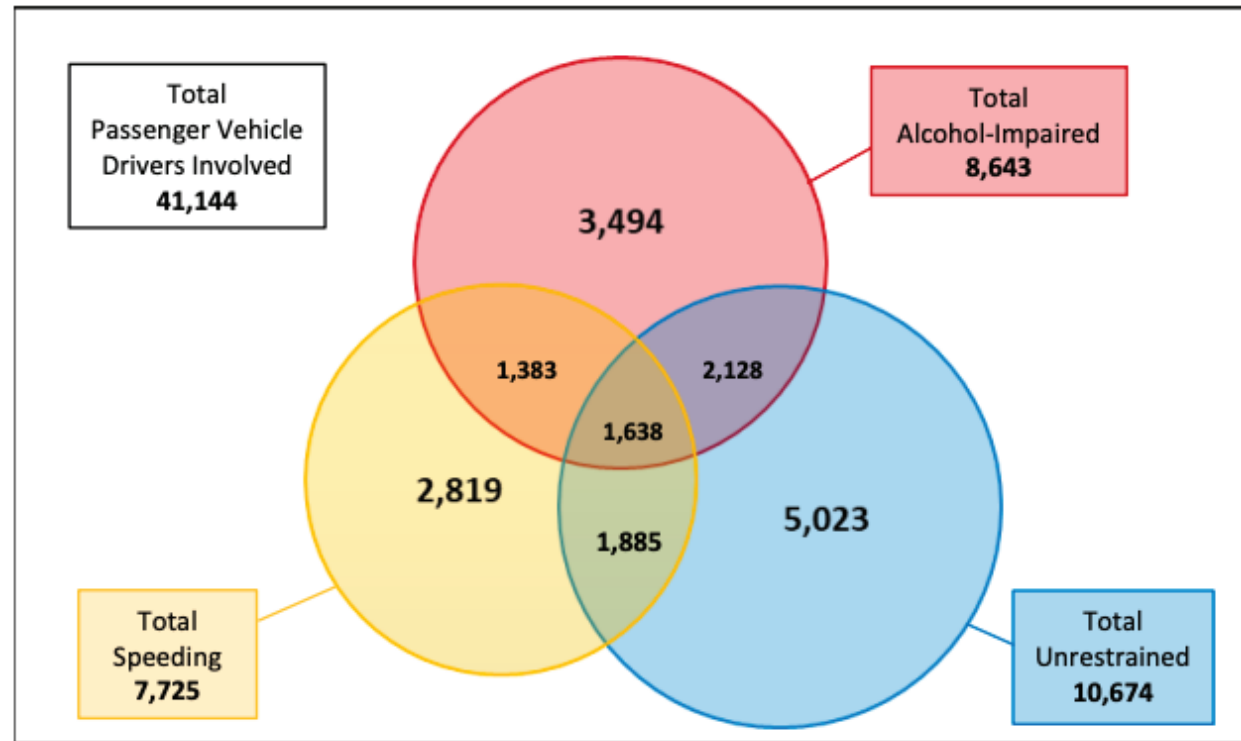
**First half of 2022 trending above 2021 at 20,175 but slight drop in 2nd quarter**



# PANDEMIC PICTURE CHANGES THE LANDSCAPE

Source: NHTSA FARS

- 38,824 deaths in 2020 – the most since 2007 and a 6.8% increase over 2019
- 10.5% increase in 2021, to 42,915
- Empty roads invite speeding: MSP issue record number of citations for speeding over 100 mph
- Rise of risky pandemic behavior: speeding, alcohol impairment, and seat belt non-use fatalities increased



Source: FARS 2020 ARF

Figure 7. Passenger Vehicle Drivers Involved in Fatal Crashes, by Speeding Involvement, Alcohol-Impaired Driving, and Restraint Use

# PANDEMIC CHANGES THE NATIONAL PICTURE

FROM 2019 TO 2020 (SOURCE: NHTSA, FARS)

- Fatalities in speeding-related crashes up **17%**
- Fatalities in alcohol-impaired driving crashes up **14%**
- Unrestrained passenger vehicle occupant fatalities up **14%**
- Motorcyclist fatalities up **11%** (highest number since first data collection in 1975)
- Bicyclist fatalities up **9.2%** (highest number since 1987)
- Passenger car occupant fatalities up **9%**
- Fatalities in urban areas up **8.5%**
- Pedestrian fatalities up **3.9%** (highest number since 1989)
- Fatalities in hit-and-run crashes up **26%**
- Fatalities in large-truck crashes **down 1.3%**? Why?

# REGIONAL PICTURE

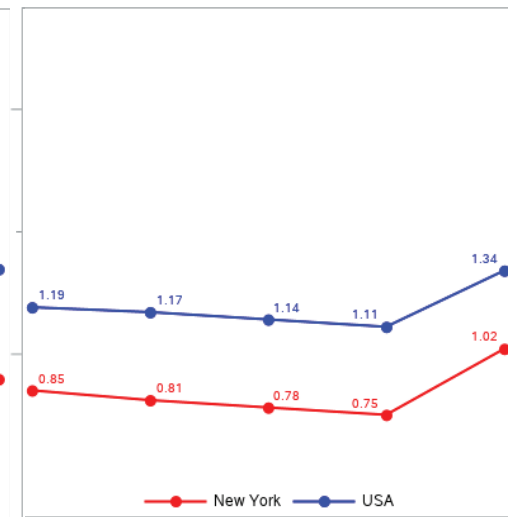
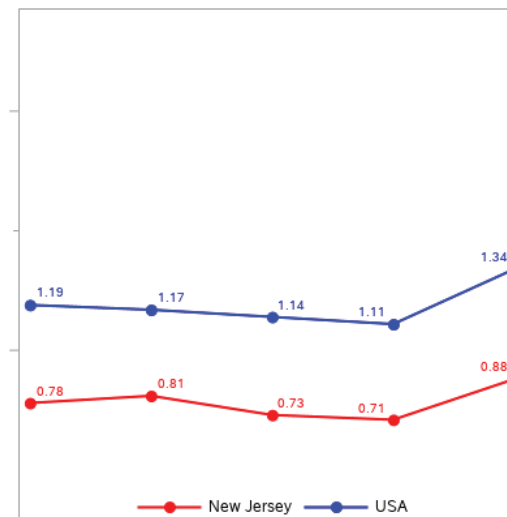
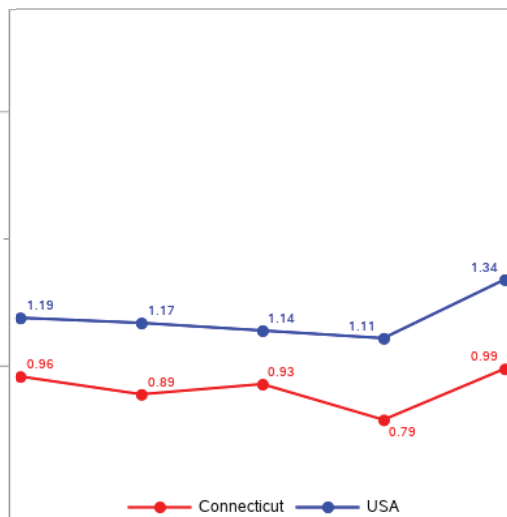
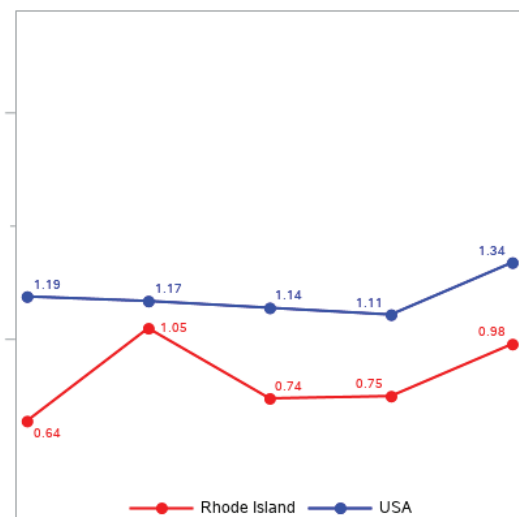
## Fatalities per 100m vehicle miles traveled, 2016–2020

### RI

### CT

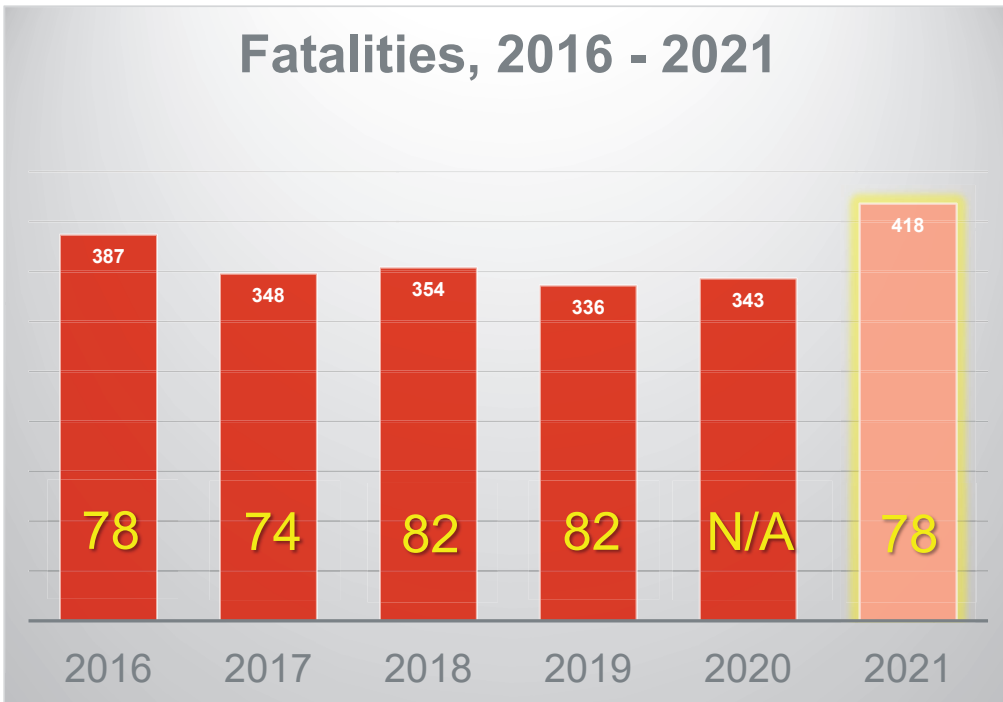
### NJ

### NY

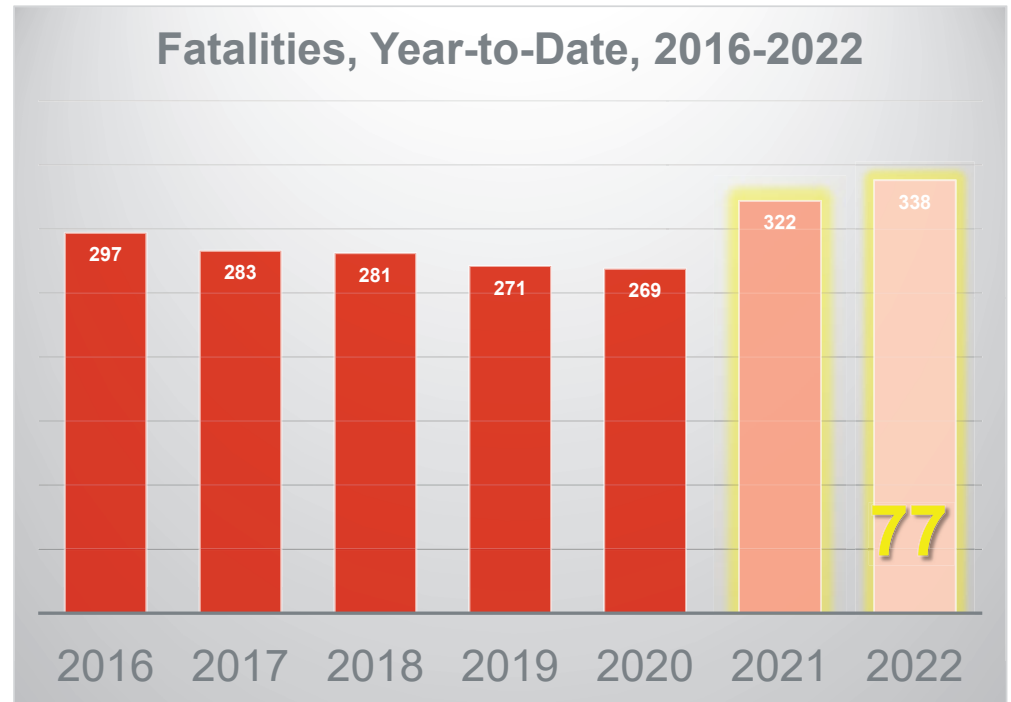


# MASSACHUSETTS: A CLOSER LOOK

## Fatalities, 2016 - 2021



## Fatalities, Year-to-Date, 2016-2022



Source: MassDOT IMPACT crash portal. 2021 and 2022 data is still preliminary.

Yellow numbers = observed seat belt usage rates. No data from 2020 due to COVID-19.



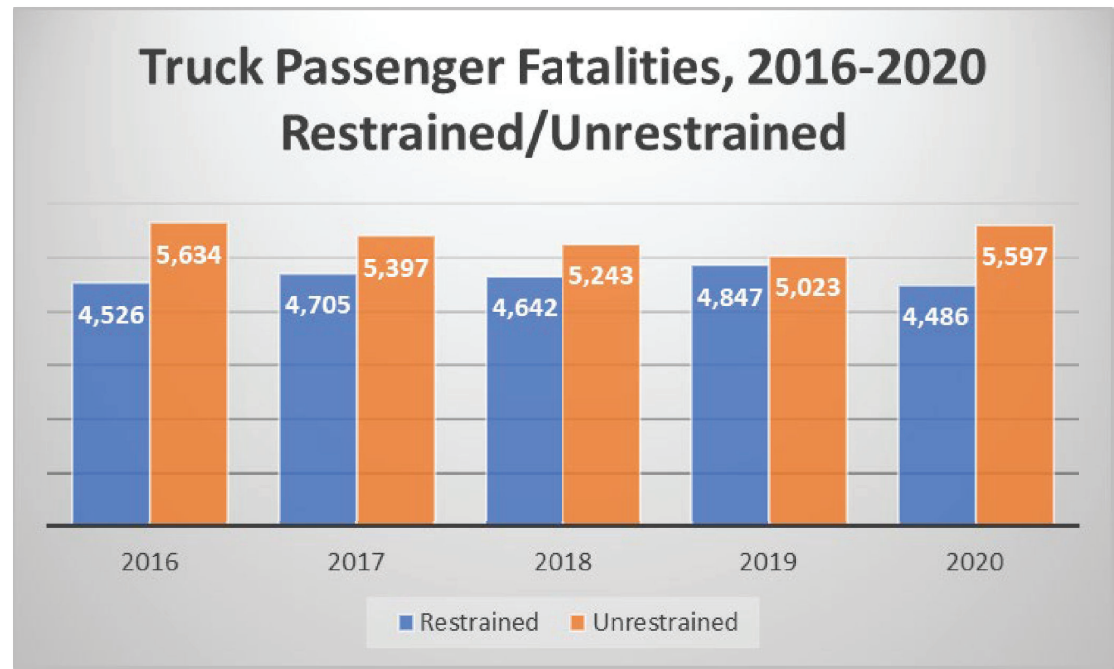
## COMMERCIAL VEHICLE SAFETY

Large Trucks accounted for 8.9 percent of vehicles in fatal crashes in 2020.

Light Trucks accounted for 37.9 percent of vehicles in fatal crashes in 2020.

Passenger cars accounted for 38.5 percent.

Seatbelt Usage Rates Remain Low, Especially among commercial drivers 30-50.





# COMMERCIAL VEHICLE SAFETY

## Slow Down, Move Over Law

- U.S. House / Senate Res. 734 “ Supporting the Goals and Ideals of a National Move Over Law Day”
- PR/Messaging campaigns

## Vehicle Safety Equipment Laws

- Massachusetts vulnerable road users bill (convex mirrors, side guards, for trucks) HB5103



# COMMERCIAL VEHICLE SAFETY / DROWSY DRIVING

- Roughly 18% of truck drivers report falling asleep behind the wheel.
- Earlier studies indicate that drowsy driving could be involved in upwards of 40% of truck crashes.
- About 50% of crashes involving driver fatigue take place between midnight and 8 a.m.



# COMMERCIAL VEHICLE SAFETY

- **Bus** travel accounts for only 10% of annual fatalities
- Second only to air travel in terms of safety
- Fuel efficient: 1 bus = many cars
- Buckle up even on the bus!
- Safe drivers often forget to buckle up on buses, in taxis and Uber/Lyft rides



**THANK YOU**

**MARY MAGUIRE, VICE PRESIDENT, PUBLIC/GOVERNMENT AFFAIRS**  
**MMAGUIRE@AAANORTHEAST.COM**



# COMMERCIAL VEHICLE SAFETY